



P500V & X SERIES PUMP REPAIR KITS

REPAIR KIT NO. - RK500V225-□□(1)-□□(2)

PART NUMBER	DESCRIPTION	QUANTITY
BR-121-90	BODY SEAL O-RING	1
CV202265	DISCHARGE CHECK VALVE	1
CV202294	SUCTION CHECK VALVE	1
MC102121	PISTON GUIDE RING	1
MC102122	MOTOR RETURN SPRING	1
MC225-02BR	PISTON U-CUP-BUNA N	1
PP202161-□□(1)	PISTON/PLUNGER ASSEMBLY	1
SS500V-□□(2)	PLUNGER SEAL SET	1
G321M1	1 oz of SILICONE GREASE	1

SEAL KIT NO. - SK500V225-□□(1)**

BR-016	O-RING/BUNA N	1
BR-111	O-RING/BUNA N	1
BR-121-90	BODY SEAL O-RING	1
MC102121	PISTON GUIDE RING	1
MC225-02BR	PISTON U-CUP-BUNA N	1
SS500V	PLUNGER SEAL SET	1
T-009	TEFLON O-RING	1
T-012	TEFLON O-RING	1
G321M1	1 oz of SILICONE GREASE	1

REPAIR KIT NO. - RK500V300-□□(1)-□□(2)

BR-121-90	BODY SEAL O-RING	1
CV202265	DISCHARGE CHECK VALVE	1
CV202294	SUCTION CHECK VALVE	1
MC102122	MOTOR RETURN SPRING	1
MC102171	PISTON GUIDE RING	1
MC300-02BR	PISTON U-CUP/BUNA N	1
PP202178-□□(1)	PISTON/PLUNGER ASSEMBLY	1
SS500V-□□(2)	PLUNGER SEAL SET	1
G321M1	1 oz of SILICONE GREASE	1

SEAL KIT NO. - SK500V300-□□(1)**

BR-016	O-RING/BUNA N	1
BR-111	O-RING/BUNA N	1
BR-121-90	BODY SEAL O-RING	1
MC102171	PISTON GUIDE RING	1
MC300-02BR	PISTON U-CUP-BUNA N	1
SS500V	PLUNGER SEAL SET	1
T-009	TEFLON O-RING	1
T-012	TEFLON O-RING	1
G321M1	1 oz of SILICONE GREASE	1

REPAIR KIT NO. - RK500V400-□□(1)-□□(2)

BR-121-90	BODY SEAL O-RING	1
CV202265	DISCHARGE CHECK VALVE	1
CV202294	SUCTION CHECK VALVE	1
MC102122	MOTOR RETURN SPRING	1
MC102174	PISTON GUIDE RING	1
MC400-02BR	PISTON U-CUP/BUNA N	1
PP202180-□□(1)	PISTON/PLUNGER ASSEMBLY	1
SS500V-□□(2)	PLUNGER SEAL SET	1
G321M1	1 oz of SILICONE GREASE	1
OR102386	SEALING RING - TFE	1

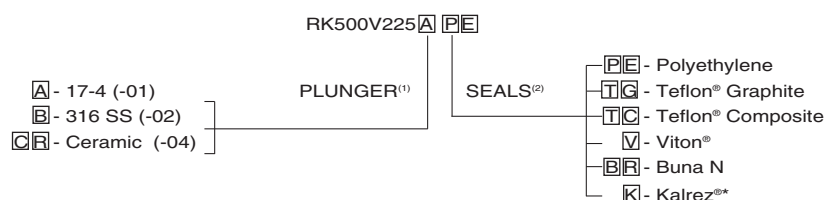
SEAL KIT NO. - SK500V400-□□(1)**

BR-016	O-RING/BUNA N	1
BR-111	O-RING/BUNA N	1
BR-121-90	BODY SEAL O-RING	1
MC102174	PISTON GUIDE RING	1
MC400-02BR	PISTON U-CUP-BUNA N	1
SS500V	PLUNGER SEAL SET	1
T-009	TEFLON O-RING	1
T-012	TEFLON O-RING	1
G321M1	1 oz of SILICONE GREASE	1
OR102386	SEALING RING - TFE	1

(1) & (2): To order the proper plunger and seal materials, please indicate the appropriate letter as shown in the example.

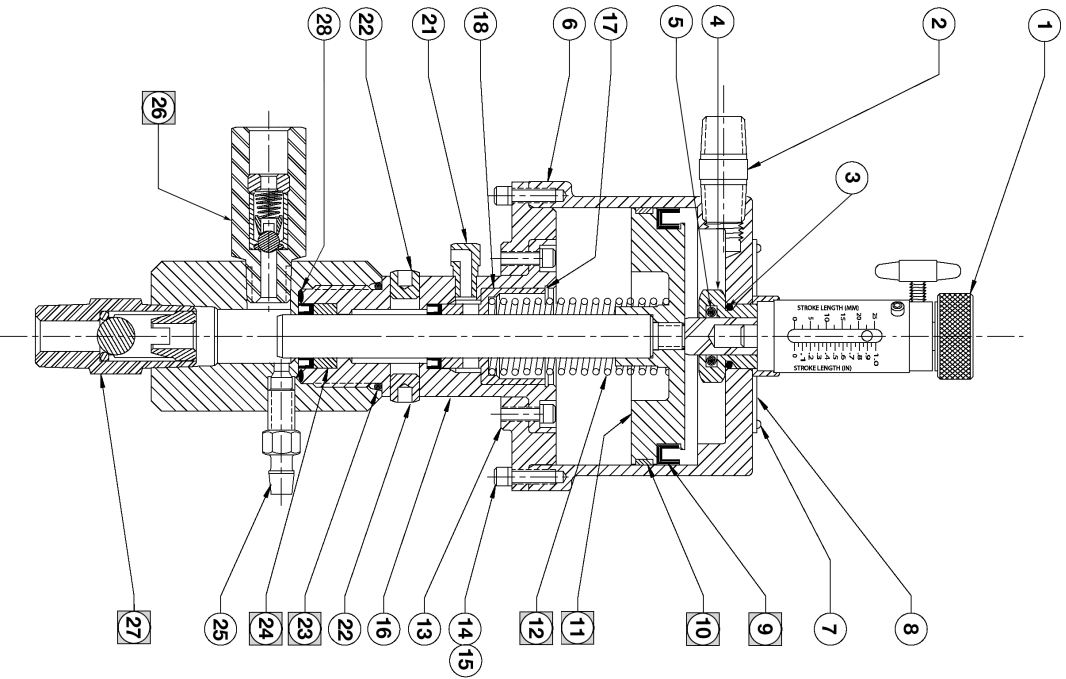
*Equivalent material substitution without notice.

**To order seals kits: Identify Seal Kit No. SK500V□□□, followed by plunger material code □□ (1).



Note: The pump repair kits for the X Series plunger pumps are identical to the V Series shown above.

P500V & X SERIES PUMP PARTS LIST



ITEM	DESCRIPTION	NO. REQ'D	P500V225 P500X225	P500V300 P500X300	P500V400 P500X400
1	STROKE ADJUSTER - 500	1	SA202312	SA202312	SA202312
2	CONNECTOR NIPPLE	1	OS395	HN1414304	HN88316
3	O-RING PISTON STOP, BUNA N	1	BR-016	BR-016	BR-016
4	PISTON STOP - CYLINDER	1	MC202140	MC202140	MC202140
5	O-RING PLUNGER, BUNA N	1	BR-111	BR-111	BR-111
6	MOTOR CYLINDER	1	MC202124	MC202169	MC302172
7	DRIVE SCREWS - DATA PLATE	3	S2316D	S2316D	S2316D
8	DATA PLATE	1	DP202156	DP202182	DP202183
9	U CUP - PISTON, BUNA N	1	MC225-02BR	MC300-02BR	MC400-02BR
10	GUIDE RING - PISTON	1	MC102121	MC102171	MC102174
11	ASSY - PISTON/PLUNGER (SEE NOTE 1)	1	PP202161-01	PP202178-01	PP202180-01
12	SPRING - PISTON	1	MC102122	MC102122	MC102122
13	FACE PLATE - CYLINDER	1	MC202125	MC202168	MC202179
14	SCREW, 8-32 X 1/2, SS	10	A83212SHCS	A83212SHCS	A83212SHCS
15	WASHER, #8 SS SPLIT SEAT	10	W8L	W8L	W8L
16	ASSY - BODY & FLUID CYLINDER	1	PP301933	PP301933	PP301933
17	RETAINER - SPRING SEAT	1	MC102189	MC102189	MC102189
18	SEAT - SPRING	1	MC202160	MC202160	MC202160
19	DISC - FILTER, .304SS 60 MIC. (NOT SHOWN)	4	MC102360	MC102360	MC102360
20	RETAINER - PLUG FILTER (NOT SHOWN)	4	MC102150	MC102150	MC102150
21	PLUG - VENT, 1/16 NPT	1	PP102143	PP102143	PP102143
22	PLUG - 1/8 NPT	2	OS601	OS601	OS601
23	O RING - BODY SEAL, BUNA N	1	BR-121-90	BR-121-90	BR-121-90
24	PLUNGER SEAL SET (SEE NOTE 2)	1	SS500V-PE	SS500V-PE	SS500V-PE
25	BLEEDER SEAL SET (SEE NOTE 2)	1	BV202139	BV202139	BV202139
26	ASSY - CV4 DISCHARGE CHECK VALVE	1	CV202265	CV202265	CV202265
26a	SPRING	1	CV102310	CV102310	CV102310
26b	CHECK VALVE BODY	1	CV202266	CV202266	CV202266
26c	BALL SEAT	1	CV202267	CV202267	CV202267
26d	SLEEVE	1	CV202268	CV202268	CV202268
26e	RETAINER SLEEVE	1	CV202269	CV202269	CV202269
26f	1/4" BALL - 316 SS	1	CV4-2S	CV4-2S	CV4-2S
26g	O-RING/TEFLON	1	T-009	T-009	T-009
27	ASSY - CV8 SUCTION CHECK VALVE	1	CV202294	CV202294	CV202294
27a	7/16" BALL - 316 SS	1	CV102313	CV102313	CV102313
27b	CHECK VALVE BODY	1	CV202295	CV202295	CV202295
27c	SLEEVE	1	CV202296	CV202296	CV202296
27d	RETAINER SLEEVE	1	CV202297	CV202297	CV202297
27e	O-RING/TEFLON	1	T-012	T-012	T-012
28	SEALING RING	1	-	-	OR102386
N/A	PUMP REPAIR KIT (SEE NOTES 1 & 2)	1	RK500V225A-PE	RK500V300A-PE	RK500V400A-PE
N/A	SEAL KIT (SEE NOTE 2)	1	SK500V225-PE	SK500V300-PE	SK500V400-PE
N/A	PLUNGER SEAL SET (SEE NOTE 2)	1	SS500V-PE	SS500V-PE	SS500V-PE

REPAIR KITS: The items identified with the symbol are contained in a complete pump repair kit. The repair kits listed above contain the standard materials. Alternate plunger and seal materials must be specified separately.

NOTE 1: PLUNGER (Item #11). Designate the proper plunger material by adding a dash number to the base part number. For 17-4ph (-01), for 316SS (-02) and for ceramic (-04).

NOTE 2: PLUNGER SEAL SETS (Item #24). Seals must be compatible with the chemical used. Designate the proper seal material by adding a dash number to the base part number. For Polyethylene (-PE), Teflon Graphite (-1G), Teflon Composite (-1C), Viton (-V), Buna N (-5H) or Kalrez (K). Please specify at placement of order.