

6

5

4

3

2

1

D

D

C

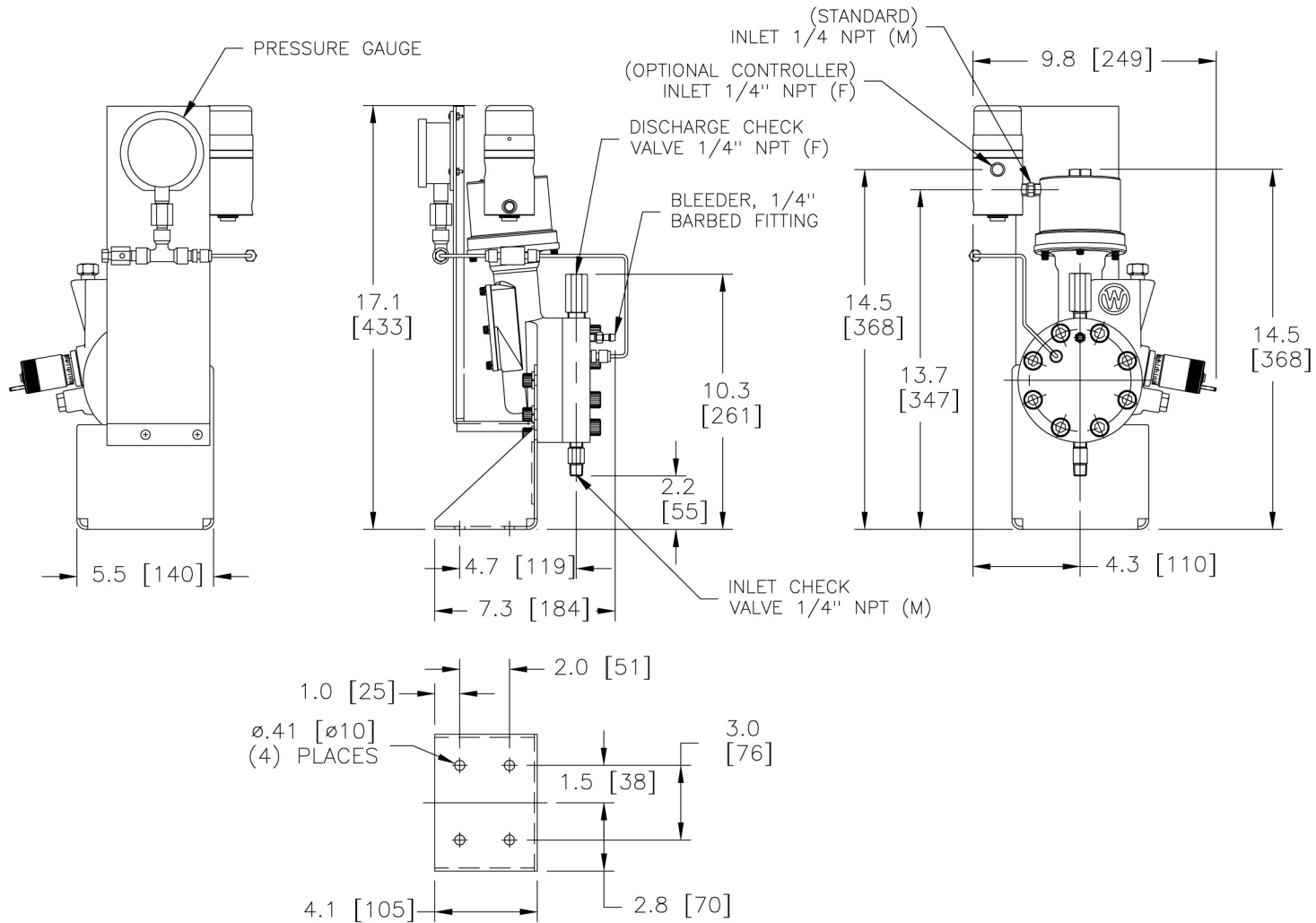
C


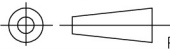
B

B

A

A



				TOLERANCE/FINISH UNLESS OTHERWISE SPECIFIED			 MILTON ROY FLOW CONTROL DIVISION A SUNDSTRAND SUBSIDIARY 201 IVYLAND RD IVYLAND, PA 18974-0577 USA		WILROY ASSEMBLY DRAWING OPTIONAL MKXIIIA CONTROLLER LEAK DETECTION W/GAUGE	
				125 $\sqrt{\text{RMS}}$						
				DECIMAL(2)	DECIMAL(3)	ANGULAR				
				± .125	± .125	± 1/2°				
				 THIRD ANGLE PROJECTION						
				DRAWN DATE		APPR DATE		THIS DOCUMENT CONTAINS PROPRIETARY INFORMATION OF MILTON ROY COMPANY. NEITHER RECEIPT NOR POSSESSION THEREOF CONFERS ANY RIGHT TO REPRODUCE, MODIFY, USE, OR DISCLOSE, IN WHOLE OR IN PART, ANY SUCH INFORMATION WITHOUT WRITTEN AUTHORIZATION FROM MILTON ROY COMPANY.		
				C.J. KING 2/06/02		DB 2/02		JOB: A 102-2800-000		REV
REV	DESCRIPTION			ECN	BY DATE	APP'D DATE	SCALE NONE		SHEET 1 OF 1	

6

5

4

3

2

1

AUTOCAD



WILLIAMS
MILTON ROY