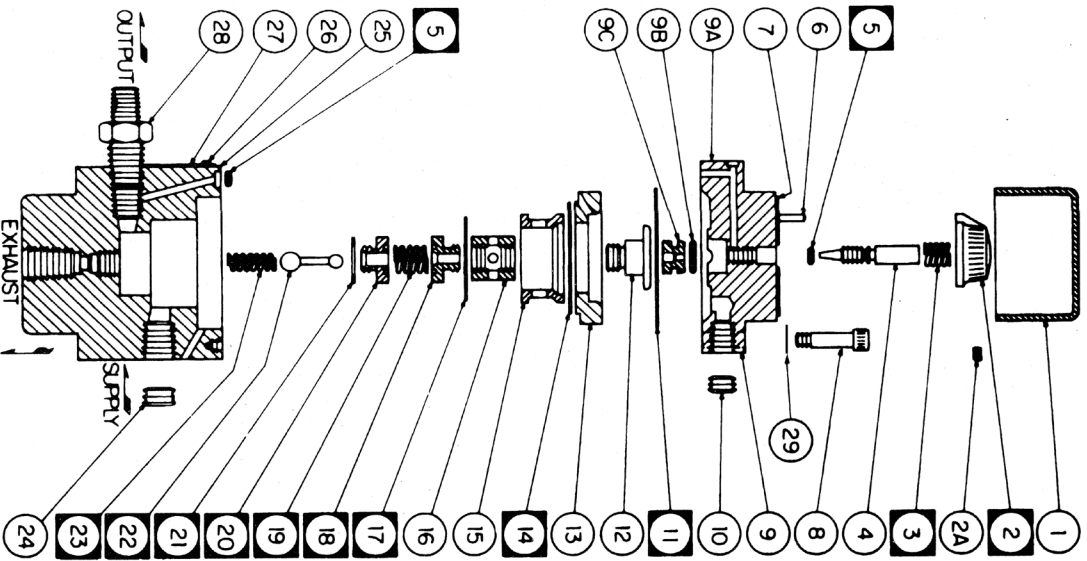


MK-II & MK-VII CONTROLLER PARTS LIST



ITEM	DESCRIPTION	NO. REQ'D.	MK-II	MK-VII
1	PROTECTIVE CAP	1	OS30	OS30
2	+STROKE RATE KNOB	1	OS31	OS31
2a	+KNOB SET SCREW	1	OS31B	OS31B
3	+VALVE STEM SPRING	1	OS31A	OS31A
4	+VALVE STEM	1	OS33	OS33
5	+VALVE STEM O-RING-VITON	2	V-006	V-006
6	+KNOB LIMIT PIN	1	OS32	OS32
7	+STROKE RATE DIAL	2	OS43	OS43
8	SCREWS 10-32 x 7/8 S.S.	1	OS32	OS32
9	+VALVE BODY ASSEMBLY	6	OS573	OS573
9a	VALVE BODY	1	OS85-100	OS85-100
9b	VALVE SEAT O-RING	1	OS85	OS85
9c	VALVE SEAT	1	V-011	V-011
10	PILOT PULSE PLUG 1/8 NPT	1	OS86	OS86
11	UPPER DIAPHRAGM	1	OS601	OS601
12	DIAPHRAGM PLATE	1	OS582	OS582
13	UPPER SPOOL	1	OS589-II	OS589-II
14	SNAPPER DIAPHRAGM	1	OS578	OS578
15	LOWER SPOOL	1	OS583	OS583
16	SPACER	1	OS580	OS580
17	LOWER DIAPHRAGM	1	OS581	OS581
18	UPPER SEAT	1	OS584	OS584
19	SPOOL SPRING	1	OS586	OS586
20	LOWER SEAT	1	OS566	OS566
21	GASKET	1	OS565	OS565
22	PILOT PLUG	1	OS118	OS118
23	LOWER SPRING	1	OS112	OS112
24	CONTROLLER BODY PLUG 1/4 NPT	1	OS585-II	OS585-VII
25	CONTROLLER BODY	1	OS600	OS600
26	DATA PLATE DRIVE SCREWS	1	OS876	OS876
27	DATA PLATE	4	S2316D	S2316D
28	CONNECTOR NIPPLE 1/4 NPT X 1/8 NPT	1	MK-2	MK-2
29	WSHR, #10 BELLEVILLE SERR LK SS	1	OS39	OS39
		6	OS574	OS574

IMPORTANT: + These items are provided only as an assembly P/N OS85-100, consisting of items 2, 2a, 3, 4, 5, 6, 7 and 9. During rebuilding assembly consisting of items 12, 14, 16, 17 and 18, they should be HAND-TIGHT, THEN USE WRENCH FOR 1/8 TO 1/4 TURN. PLEASE DO NOT OVERTORQUE.

SUPPLY PRESSURES:
 MK-II = 25-65 PSI (1.72-4.48 Bar)
 MK-VII = 50-90 PSI (3.44-6.20 Bar)

APPLICATION INFORMATION:
 The MK-II performs optimally on metering pumps with 1.25 and 2.25 inch motor cylinders. The MK-II is the preferred unit to be used in conjunction with all the "VIC" relays.

The MK-VII performs optimally on metering pumps with 3.00 and 4.00 inch motor cylinders. The MK-VII is the required unit when high discharge pressures require a supply pressure greater than 65 PSI.

Valve stem (item no. 4) is a control valve only. **CAUTION:** DO NOT USE AS A SHUT-OFF VALVE. Isolation valve should be installed upstream of the MK-II and MK-VII controller for shut-off purposes.

REPAIR KITS: RK-OS42-II/VII. The items identified with the symbol are contained in a complete controller repair kit.